



FROGS

OF NEW HAMPSHIRE

BULLFROG
Rana catesbeiana



© NHFG VICTOR YOUNG PHOTO

Size: Up to 20 cm (7.9 in). Largest frog in U.S.
Distribution: Widespread throughout N.H.
Habitat: Shallow bays and coves of large lakes, slow-moving rivers, streams, and ponds.
Voice: A series of deep bass notes resembling the phrase "jug-o'-rum." Males begin calling in May and June.

GREEN FROG
Rana clamitans melanota



© NHFG VICTOR YOUNG PHOTO

Size: 5.5-12.5 cm (2.5-4 in)
Distribution: Widespread throughout N.H.
Habitat: Moist woodlands and shores of ponds, streams, and lakes. Breeds in shallow waters of ponds, lakes and other permanent waterbodies.
Voice: Like the twang of a banjo string, usually given a single note at a time. Often gives a startled yelp as it leaps away.

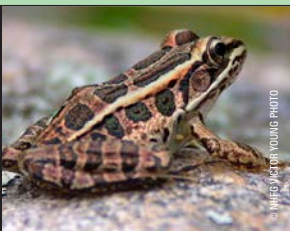
NO. LEOPARD FROG
Rana pipiens



© NHFG VICTOR YOUNG PHOTO

Size: 5.4-9.5 cm (2.1-3.7 in)
Distribution: Patchy throughout N.H.
Habitat: Found in fields or meadows in late summer. In spring, breeds in shallow waters associated with rivers, lakes and wetlands.
Voice: Deep, guttural snore followed by several clucking notes.

PICKEREL FROG
Rana palustris



© NHFG VICTOR YOUNG PHOTO

Size: 4.4-7.6 cm (1.7-3 in)
Distribution: Widespread throughout N.H.
Habitat: Fields, meadows, and damp woods. Breeds in shores of lakes, ponds, streams and other wetlands with dense vegetation.
Voice: A low, steady croak lasting 1 to 2 seconds.



WOOD FROG

Rana sylvatica



© NHFG VICTOR YOUNG PHOTO

Size: 3.7 to 7 cm (1.5-3 in)
Distribution: Widespread throughout N.H.
Habitat: Forests and wooded wetlands. Breeds in vernal pools in or near wooded areas.
Voice: Short raspy quacks, like a duck.

MINK FROG

Rana septentrionalis



© SUZANNE L. COLLINS PHOTO

Size: 4.5-7.6 cm (1.8-3.0 in)
Distribution: Northern N.H.
Habitat: Lives and breeds in shallow ponds, lakes and streams with abundant vegetation.
Voice: A deep, low-pitched *cut-cut-cut-cut-cut*.

GRAY TREE FROG

Hyla versicolor



© NHFG VICTOR YOUNG PHOTO

Size: 3-5 cm (1.5-2 in)
Distribution: Throughout N.H. except in far north.
Habitat: Wooded areas near shallow water. Breeds in vernal pools, marshes and swamps.
Voice: A loud, resonating trill.

SPRING PEEPER

Pseudacris c. crucifer



© STEVE ROBBIE PHOTO

Size: 1-3cm (0.75-1.25 in)
Distribution: Widespread throughout N.H.
Habitat: Deciduous, coniferous, mixed woodlands. Breeds in ponds, pools, marshes, swamps.
Voice: High-pitched, ascending whistle or peep.

AMERICAN TOAD

Bufo a. americanus



© NHFG VICTOR YOUNG PHOTO

Size: 6-11 cm (2-5 in)
Distribution: Widespread throughout N.H.
Habitat: A variety of forested and open habitats, uplands, and wetlands. Breeds in shallow waters including vernal pools, ditches, old beaver flow-ages and coves of large lakes.
Voice: A long, musical trill.

FOWLER'S TOAD

Bufo fowleri



© JOHN MOSSOSSO JR. PHOTO

Size: 6-12.7 cm (2.5-5 in)
Distribution: Southern N.H.
Habitat: Pine and oak forests and fields with sandy soils. Breeds in shallow waters of rivers, ponds and pools.
Voice: A nasal, bleating *w-a-a-a-a-h* lasting 1 to 4 seconds.



Learn more about New Hampshire's frogs and hear their calls at:

www.nhfg.net/nongame

