



BUTTERFLIES

OF NEW HAMPSHIRE

MONARCH
Danaus plexippus



Description: 3½ – 4". Above, orange w/black veins and black margins w/white spots. Below, paler orange. Larger size and lack of vein on top hind wings distinguishes from Viceroy.

Habitat: Fields, meadows, roadsides w/milkweed.

Flight: Only butterfly that migrates. April – June, migrating north. July – August resident in N.H. September – October, migrating south for winter.

Range: Common throughout N.H.

VICEROY
Limenitis archippus



Description: 2⁵/₈ – 3". Orange w/black veins above and below. Black border w/white spots. Black vein across hind wings distinguishes from monarch.

Habitat: Marshes, meadows, wood edges, roadsides, lakeshores.

Flight: 2-3 broods, April – September.

Range: Common throughout N.H.

EASTERN TIGER SWALLOWTAIL
Papilio glaucus



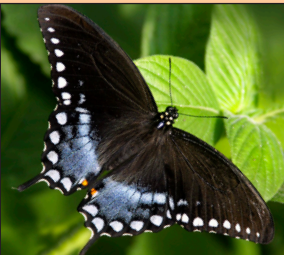
Description: 3¹/₈ – 5¹/₂". Yellow w/black stripes across wings. Black borders around edges w/yellow spots. Long black tail on each hind wing.

Habitat: Orchards, gardens, parks, roadsides and river edges.

Flight: 1-3 broods, spring – fall.

Range: Common throughout N.H.

SPICEBUSH SWALLOWTAIL
Papilio troilus



Description: 3½ – 4½". Both sexes black-brown above w/white spotted margins. Hind wings greenish on males and bluish on females.

Habitat: Wooded areas, forest edges, fields, meadows, gardens and pine barrens w/spicebush, sassafras and other laurels.

Flight: Spring – early fall.

Range: Common throughout N.H.

NHFG COMPOSITE

© PATRICK LAMONT / DREAMSTIME.COM

© VICTOR YOUNG PHOTO



KARNER BLUE
Lycaeides melissa samuelis
**STATE AND FEDERALLY
ENDANGERED**



Description: 1". Males blue above. Females darker blue, black or gray w/orange crescents on the hind wings. Both have a black edge w/white outer fringe.
Habitat: Pine barrens w/wild blue lupine.
Flight: 1st brood mid-May – mid-June, 2nd brood mid-June – mid-July.
Range: Rare. Only occurs in Concord.

**EASTERN TAILED
BLUE**
Evers comyntas



Description: ¾ – 1". Male bright blue, female black-brown above. Both have 1-2 orange spots on top of hind wings. Commonly confused w/Karner blue.
Habitat: Flower gardens, parks and meadows.
Flight: Spring – late summer
Range: Common throughout N.H.

WHITE ADMIRAL
Limemitis arthemis arthemis



Description: 2 7/8 – 3 1/8". Both sexes black above w/white band across wings, above and below. Often blue or blue-green iridescence above. Brick red spots below and may occur above.
Habitat: Mixed and hardwood forests, woodland edges w/birches, willows and poplars.
Flight: 1 or 2 broods, June – August.
Range: Common throughout N.H. May hybridize w/red spotted purple.

RED SPOTTED PURPLE
Limemitis arthemis astyanax



Description: 3 – 3 3/8". Coal black above w/blue-green iridescence. Brick red spots line borders below.
Habitat: Open woodlands, forest edges, meadows w/willows, poplars, aspens, apple, cherry and hawthorn trees.
Flight: Mid-spring – summer.
Range: Throughout southern N.H. May hybridize w/white admiral.

**PERSIUS DUSKYWING
SKIPPER**
Erynnis persius persius
STATE ENDANGERED



Description: 1 – 1 3/8". Male patterned above and covered w/gray hairs. Female lighter in color above w/more visible pattern.
Habitat: Pine barrens w/wild blue lupine.
Flight: April – June.
Range: Rare. Only occurs in Concord.

FROSTED ELFIN
Callophrys irus
STATE ENDANGERED



Description: 7/8 – 1 1/4". Male gray-brown above. Female reddish overall or in patches. Underneath chestnut-gray-brown w/frosted silver-gray dusting and black spot on hind wing.
Habitat: Pine barrens w/open areas from clearing or burns.
Flight: Late April – May.
Range: Rare. Only occurs in Concord.

© PAUL LABUS / TNC INDIANA

NHFG COMPOSITE

NHFG COMPOSITE

NHFG COMPOSITE

NHFG COMPOSITE

NHFG COMPOSITE



Learn more about New Hampshire's butterflies at:
www.WildNH.com/nongame

