

AGING SPRING TURKEYS

ADULT or JUVENILE:

Examine the last 1 or 2 wing feathers. Measure the spur. Measure the beard. Examine the tail fan.

WING – Examine the last 1 or 2 wing feathers.



ADULTS have rounded feathers with white barring to the tip.



JUVENILES have narrow pointed feathers with no white bars on the last 2 inches.

SPUR – Spurs grow as the turkey gets older. Generally the longer the spur, the older the bird.



Use a ruler to measure the length of each spur to the nearest 1/16 inch.



ADULT spurs are generally longer than 1/2”.



JUVENILE spurs are generally shorter than 1/2”.

BEARDS – beards grow as the turkey gets older.

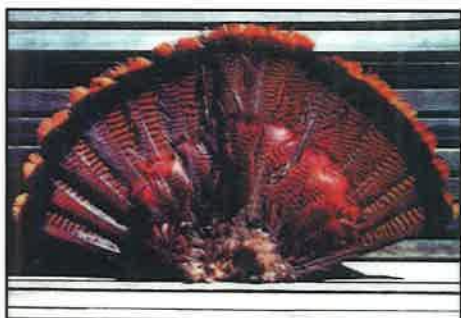


Measure the beard from the point of attachment to end of beard.

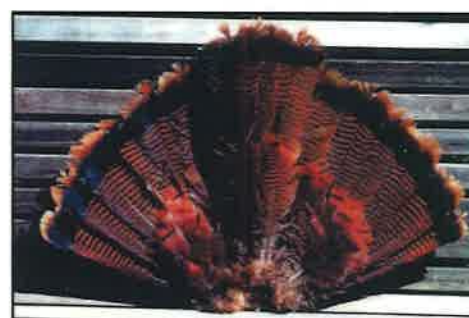


ADULT beards are generally longer than 5”.

TAIL – fan the tail and look at the central tail feathers.



ADULT tail fan is symmetrical. Central tail feathers are the same length as the rest of the tail feathers.



JUVENILE tail fan is not symmetrical. Central tail feathers are longer than the rest of the tail feathers.



New Hampshire Fish and Game Department

Wildlife Division • 11 Hazen Drive, Concord, NH 03301 • (603) 271-2461

huntnh.com

Reprinted with permission from Maryland Department of Natural Resources